

#377 Phytolith Fingerless Mitts



Gauge:

5.5 sts = 1" in stockinette stitch

Abbreviations:

yo yarn over
 k2tog knit 2 together
 ssk slip 2 sts, one by one, as if to knit, insert tip of left needle up into both sts and knit them together

Directions:

Using a long-tail cast on and leaving a 6" tail, cast on 40 sts and knit 3 rows

Set-up row (RS): Knit, distributing 10 sts to each of 4 double pointed needles. Join in the round, being careful not to twist the sts.

Rnd 1: *K1, ssk, k6, yo, k2, yo, k6, k2tog, k1; repeat from *.

Rnd 2 and all even numbered rnds: Knit.

Rnd 3: *K1, ssk, k5, yo, k4, yo, k5, k2tog, k1; repeat from *.

Rnd 5: *K1, ssk, k4, yo, k6, yo, k4, k2tog, k1; repeat from *.

Rnd 7: *K1, ssk, k3, yo, k8, yo, k3, k2tog, k1; repeat from *.

Rnd 9: *K1, ssk, k2, yo, k10, yo, k2, k2tog, k1; repeat from *.

Rnd 11: *K1, ssk, k1, yo, k12, yo, k1, k2tog, k1; repeat from *.

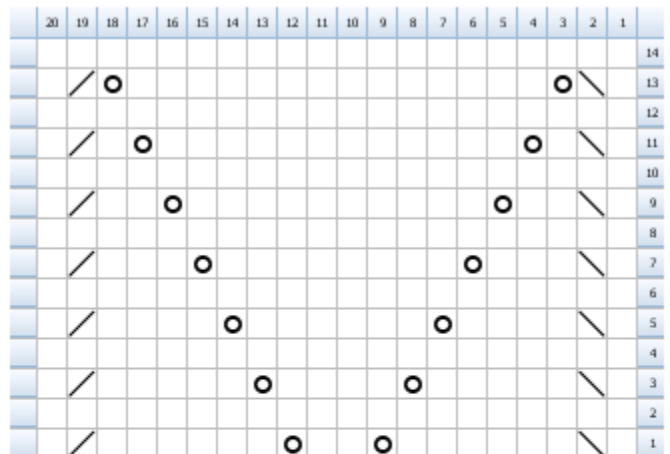
Rnd 13: *K1, ssk, yo, k14, yo, k2tog, k1; repeat from *.

Rnd 14: Knit.

Repeat Rnds 1-14 two more times.

Working back and forth in rows, knit 3 more rows and bind off loosely, leaving a 6" tail.

With the tails of yarn from the bind off and cast on, sew the edges of the garter stitch bands together and weave in the remaining loose ends.



Legend:

<input type="checkbox"/>	knit
<input type="checkbox"/>	ssk
<input type="checkbox"/>	yo
<input type="checkbox"/>	k2tog

Created in KnitVisualizer (www.knitfoundry.com)

Designed by Kirsten Hipsky

Here are some cute, durable, soft and warm little accessories for your hands. No thumb-hole means you can scrunch them up like sleeves if you need them out of your way.

The simple, sculptural lace pattern creates a varied shape that can be worn in many different ways, but I like wearing them with the points of the cast on edge on the backs of my hands and palms. Try them peeking out from under your sweater sleeves for a richly layered look.

Finished Measurements:

7.5" around, 6" long

Yarn:

1 skein Valley Yarns Northfield (70% Merino/20% Baby Alpaca/10% Silk, 124 yds/50g) color 14 Haze

Needles:

US size 5 (3.75 mm) double pointed needles